

## product\_datasheet\_title

# OT FIT 75/220...240/1A4 CS L G2

OPTOTRONIC® FIT CS L G2 | Linear / Area Constant Current – Non dimmable



### areas\_of\_application

- Linear lighting for office, education, industry, storage areas and retail
- Installation in emergency lighting systems according to IEC 61347-2-13, appendix J
- Suitable for luminaires of protection class I

### product\_benefits

- Flexible current setting (DIPswitch – 4 currents)
- Lifetime: up to 100,000 h (temperature at  $T_c = 65\text{ °C}$ , max. 10 % failure rate)
- High efficiency
- High quality of light thanks to low output ripple current
- Fulfill safety requirement due to overload, overtemperature, Hot Plug protection

### product\_features

- Line frequency: 0 Hz | 50 Hz | 60 Hz
- Versatile scope of application due to output power range of up to 75 W
- Supply voltage: 220...240 V
- Available with output current range: up to 1,400 mA
- SELV system

## technical\_data

## ELECTRICAL DATA

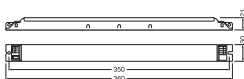
Nominal wattage	93.00 W
Nominal output power	29.7...71.4 W
Nominal voltage	220...240 V
Nominal output voltage	27...51 V
Input voltage AC	198...264 V <sup>1)</sup>
Input voltage DC	176...276 V
U-OUT (working voltage)	< 60 V
Nominal output current	1100 mA / 1200 mA / 1300 mA / 1400 mA
Inrush current	40 A
Output current tolerance	±7,5 %
Output ripple current (100 Hz)	< 5 %
Mains frequency	0/50/60 Hz
Total harmonic distortion	< 20 %
Power factor $\lambda$	0.98
ECG efficiency	≤87 %
Device power loss	11 W
Max. ECG no. on circuit breaker 10 A (B)	8
Max. ECG no. on circuit breaker 16 A (B)	13
Max. ECG no. on circuit breaker 25 A (B)	-
Surge capability (L/N-Ground)	2 kV
Surge capability (L-N)	1 kV
Galvanic isolation	SELV

1) Permitted voltage range

## PHOTOMETRICAL DATA

Flickering metric (Pst LM)	≤1
Stroboscope effect metric (SVM)	≤0.4

## DIMENSIONS &amp; WEIGHT



Length	360.00 mm
--------	-----------

Mounting hole spacing, length	350,0 mm
Width	30.00 mm
Height	21.00 mm
Cable cross-section, input side	0.5...1.5 mm <sup>2</sup>
Cable cross-section, output side	0.5...1.5 mm <sup>2</sup>
Wire preparation length, input side	8,5...9,5 mm
Wire preparation length, output side	8,5...9,5 mm
Product weight	290.00 g

## COLORS & MATERIALS

Casing material	Metal
Body material	Metal

## TEMPERATURES & OPERATING CONDITIONS

Ambient temperature range	-25...+50 °C
Maximum temperature at tc test point	80 °C
Max.housing temperature in case of fault	110 °C
Permitted rel. humidity during operation	5...85 % <sup>1)</sup>

<sup>1)</sup> Maximum 56 days/year at 85 %

## LIFESPAN

ECG lifetime	50000 h / 100000 h <sup>1)</sup>
--------------	----------------------------------

<sup>1)</sup> At maximum T<sub>c</sub> = 75°C / 10% failure rate / At T<sub>c</sub> = 65°C / 10% failure rate

## ADDITIONAL PRODUCT DATA

Encapsulated	No
--------------	----

## CAPABILITIES

Dimmable	no
Overheating protection	Automatic reversible
Overload protection	Non-reversible
No-load proof	Yes
Short-circuit protection	Automatic reversible
Max. cable length to lamp/LED module	2,0 m
Suitable for fixtures with prot. class	I
Suitable for emergency lighting	Yes
Type of connection, output side	Push terminal










## CERTIFICATES & STANDARDS

Approval marks – approval	CE / EL / ENEC 10 / VDE-EMC / CCC / RCM
Standards	Acc. to EN 61347-1 / Acc. to EN 61347-2-13 / Acc. to EN 62384 / Acc. to EN 61000-3-2 / Acc. to EN 61000-3-3 / Acc. to EN 61547
Protection class	I
Type of protection	IP20

## LOGISTICAL DATA

Temperature range at storage	-25...85 °C
------------------------------	-------------

## download\_data

Documents and certificates	document_name
 User instruction	OT FIT 35 55 75 220-240 D LT2 L
 Declarations Of Conformity CE	EU Declaration of Conformity 3666934
 Declarations Of Conformity CE	INOTEC- Conformity declaration AM04353_OT_FIT_75_220-240_1A4_CS_L_EL
 Declarations Of Conformity CE	711957_Declaration of Conformity OT FIT CS L
 Certificates	INOTEC Certificate OT FIT 75/1A4 CS L G2 appendix
 Certificates	VDE EMC Certificate 40046714
 Certificates	INOTEC Certificate OT FIT 75/1A4 CS L G2
 Certificates	VDE EMC Certificate 40038482
 Certificates	VDE ENEC Certificate 40046756

## logistical\_data

product_code	packaging_unit	dimensions	weight	volume
4052899522572	Unpacked 1			
4052899522589	Shipping box 20	385 mm x 160 mm x 100 mm	5971.00 g	6.16 dm <sup>3</sup>

logistical\_data\_text

## disclaimer\_title

disclaimer\_text